



JPLI.org JP LANGUAGE INSTITUTE

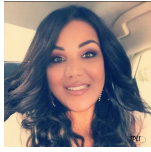
"One language sets you in a corridor for life.
Two languages open every door along the way." – Frank Smith

Congratulations!

Following students are successfully past target language official exams.

HSK Exams -The Hanyu Shuiping Kaoshi (HSK)

A standardized test of Standard Chinese (a type of Mandarin Chinese) language proficiency of Mainland China for non-native speakers such as foreign students and overseas Chinese. The test is administered by Hanban, an agency of the Ministry of Education of the People's Republic of China.



Jai Mead

Successfully complete HSK Level 5 exam and gain 7 years scholarship for graduate and undergraduate study in China.



Ben Gad

Successfully complete HSK Level 4 exam and doing business in China. And going to take HSK5 late 2023.

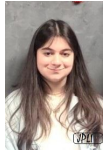


Alex Beneto

Successfully complete HSK Level 3 exam and going to take HSK 4, and going to study in Fudan University, China for graduate study 2024.

JLPT Exams-

The Japanese-Language Proficiency Test (日本語能力試験, Nihongo Noryoku Shiken), or JLPT, is a standardized criterion-referenced test to evaluate and certify Japanese language proficiency for non-native speakers, covering language knowledge, reading ability, and listening ability.



Natalie Bobek

Successfully complete JLPT4



James Tepedino

Successfully complete JLPT5.



Adan Villanueva
Successfully complete JLPT4



- Registration deadline: May 15th, 2023

Camp Date: 07/10 - 08/25/2023
Time: 9:30am - 3:30pm, Monday to Friday
Including: lunch and transportation for the site visits.
[More info...](#)



Up Coming New Courses

Each Group is Limited 5 students

[Enroll Now](#)



Introductory Latin

- Wednesday 6:30-8:30pm
- May 24th - July 19
- Sunday 1:30-3:30pm
- June 4-July 30th



Introductory Portuguese

- Sunday 11:00am-1:00pm
- May 28 - July 23
- Tuesday 6:30-8:30pm
- June 13- August 8th



Introductory Greek Language

- Thursday 6:30-8:30pm (Intro.)
- June 29 - August 17th
- Saturday 4-6:00pm
- June 24-August 20

STUDY IN JAPAN & CHINA

STUDY ABROAD - JAPAN



JP Language Institute offers opportunities to study in Japan whether you speak Japanese or not. Through close interaction with Japan's landscape, culture, and folklore, students will experience modern Japanese culture and

STUDY ABROAD - CHINA



Our Study in China Program promotes cultural and educational exchange, fosters friendships, offers opportunities for students to study Mandarin Language and Culture in China,



LEVEL UP

Take your career, skills, and confidence to the **next level** by becoming an expert in one of our recommended [Language Programs](#).



WELCOME TO JP LANGUAGE INSTITUTE

UPCOMING EVENTS

Open House
Free 2-hour demo class
May 1st - May 14th, 2023

[American Etiquette Tea Hour](#)
May 30 (Tuesday)
6:00-7:30pm

[Japanese Flower Arrangement Workshop](#)

[Click here](#) to see what else is happening

CERTIFICATE

Explore our favorite go-to certifications.

IMMERSION PROGRAMS

Find recommended programs here.

JOIN OUR TEAM

"We are hiring!"

Let's unlock the potential of language learners together.

In-person, small group,
customizable, short courses
with big impact



Our language courses are market-led and will equip you with the expertise you need to take your career and personal communication skills to the next level. Languages not only improve your memory and brain function, but also assist business leaders, increase youth career opportunities, and help youth find out more about the world.

[Read more](#)

LANGUAGE & MATH SUMMER CAMP

Your kids will learn:

- foreign Languages
(select the language you interested)
- mathematics ,
- sports and many more



Enrollment Open

enhance their communication skills. [Click here](#) to [learn more](#).

whether you speak Chinese or not. [Click here](#) to [learn more](#).

[Reserve Your Spot Now!](#)

EXPLORE COURSES



[Spanish language study](#)



[Japanese language study](#)



[Russian language study](#)



[Chinese language study](#)



[French Language study](#)



[Italian language study](#)



[Korean Language Study](#)



[English Language Study](#)



[Arabic Language Study](#)



Join our team

If you are:

- Interested in teaching a foreign language to language lovers.
- Have a bachelor or higher degree in target language or relevant.
- Experienced in bilingual education.

[More info](#)

JP LANGUAGE INSTITUTE | www.jp.li.org
Tel: (631)888-3838 | Email: admission@jp.li.org



JP Language Institute | 25 Melville Park Rd, Suite 72, Melville, NY 11747

Unsubscribe@jplanguageinstitute@gmail.com

[Update Profile](#) | [Our Privacy Policy](#) | [Constant Contact Data Notice](#)